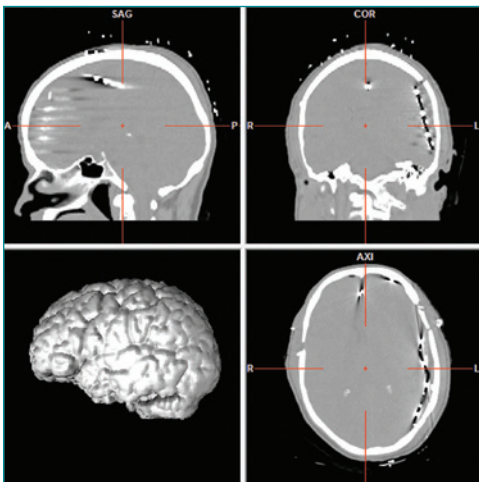


Capture & communicate intracranial EEG study findings with ease

**DISTRIBUIDOR
EXCLUSIVO PARA
MÉXICO**

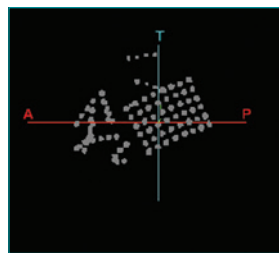
Stellate GridView enables three dimensional visualization of intracranial EEG contacts on a 3D brain model. Models generated from patient-specific MRI images allow one to accurately illustrate findings. In a few quick steps, GridView helps pull together intracranial EEG study data, combining MRI, CT and Natus® NeuroWorks® EEG results to provide a comprehensive visual of the studies.

- Automatically segment pre-op MRI images to render a patient-specific 3D brain model
- Co-register post implantation MRI or CT images with the 3D model
- Identify & highlight electrode contacts from within Natus NeuroWorks
- Annotate & communicate results

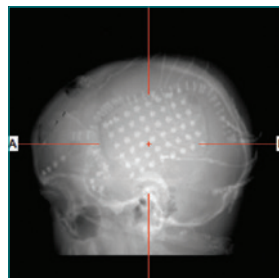


3D Model from
Pre-Op MRI

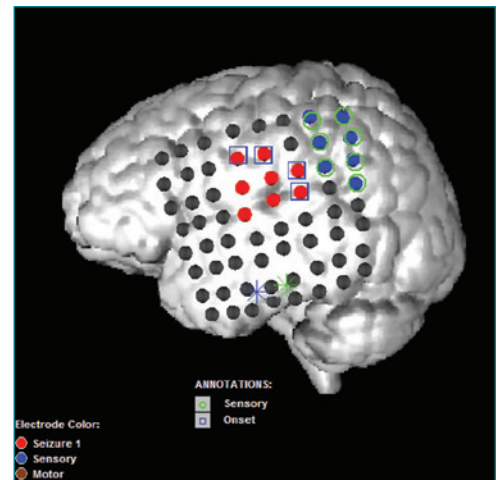
Post-Op
CT Images



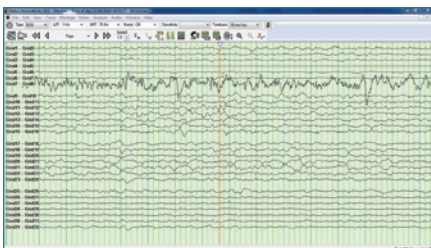
Objects Extracted
from Post-Op CT



3D Projection
Post-Op MRI Scan



Annotated Session Results



**Now integrated with
Natus NeuroWorks!**

Para obtener más información sobre los productos de Natus, póngase en contacto con su distribuidor o representante de ventas local.

Número de teléfono para clientes de México.:

33-38348777

ventas@medikal-muneris.com.mx

Healthcare solutions with one thing in mind. You.

©2020 Natus Medical Incorporated. All Rights Reserved. All product names appearing on this document are trademarks or registered trademarks owned, licensed to, promoted or distributed by Natus Medical Incorporated, its subsidiaries or affiliates. P/N 010418C

natus®

Natus Medical Incorporated

natus.com